

NOTES: MATERIAL & FINISH

- 1.INSULATOR:HIGH-TEMP THERMOPLASTIC, UL94V-0
COLOR:NATURAL OR BLACK
- 2.CONTACT:COPPER ALLOY
PLATING:GOLD FLASH OR TIN OR MATTE-TIN OVERALL NICKEL UNDER PLATED

3.ORDER INFORMATION: 3760K -XXXX-01,05,21,11 X

PACKING: R: PLASTIC REEL
E: TUBE
D: VACUUM AND HUMIDITY LABEL
L: PAPER REEL

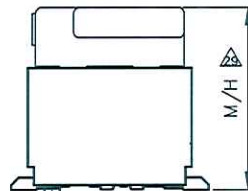
TYPE
C: CAP
Y: CAP & PRINTING DATA CODE
N: STANDARD
V: STANDARD & PRINTING DATA CODE
PIN NO.

PLATING:

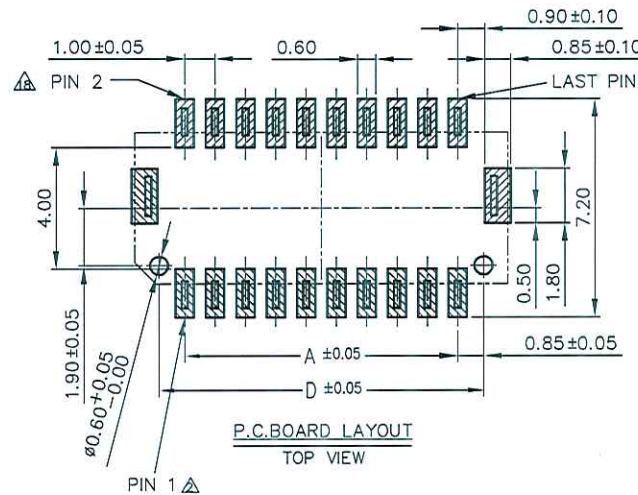
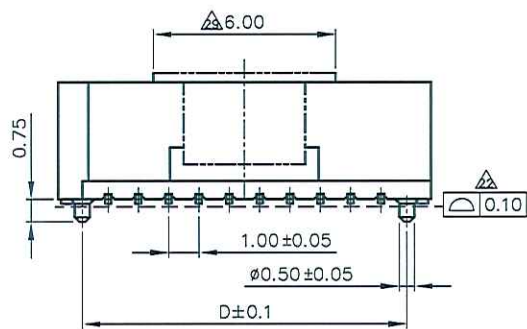
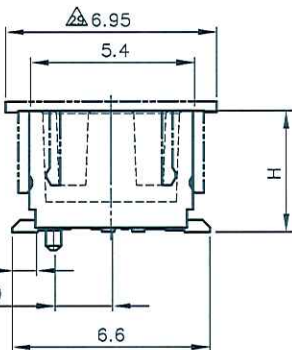
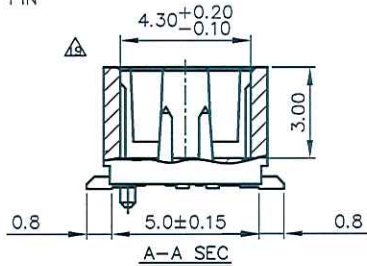
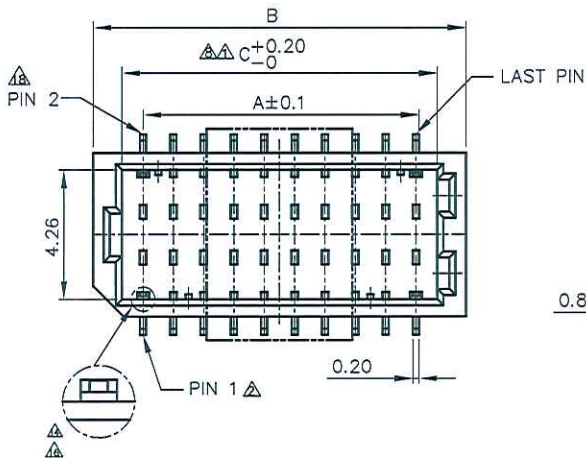
- F: GOLD FLASH, FITTING NAIL TIN
- E: TIN
- B: CONTACT AREA GOLD, SOLDER AREA TIN
- U: CONTACT GOLD-FLASH, FITTING NAIL (GOLD-FLASH)
- Q: MATTE-TIN
- M: CONTACT GOLD-FLASH 5u"(MIN)
SOLDER AREA GOLD-FLASH, FITTING NAIL TIN
- Y: GOLD FLASH (WITH NICKEL BARRIER)
- H: CONTACT AREA 15u"(MIN) GOLD, OTHER AREA GOLD FLASH, FITTING NAIL TIN-SEMI-BRIGHT
- K: CONTACT AREA 30u"(MIN) GOLD, OTHER AREA GOLD FLASH

3760K: 1.0 WTB SMT V/T TYPE DUAL ROW (HALOGEN FREE)

ENTERY INDUSTRIAL CO., LTD.
JUN - 3. 2014
R&D D.C.C. ISSUED

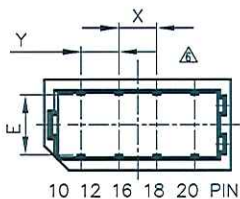
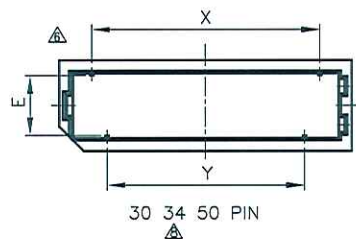


MATING VIEW

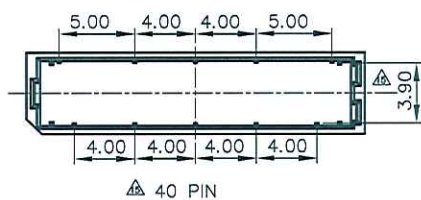


P.C. BOARD LAYOUT
TOP VIEW

TYPE	H	COLOR	M/H
01,11X	4.3	NATURAL	6.3
05X	8.0	NATURAL	10
21X	4.3	BLACK	6.3



DIM PIN	A	B	C	D	E	X	Y	補強 距離
10	4.0	7.3	5.50	5.7	4.18	2.5		2X2
12	5.0	8.3	6.50	6.7	4.18	2.5		2X2
16	7.0	10.3	8.50	8.7	4.22	2.5		2X2
18	8.0	11.3	9.50	9.7	4.22	2.5		2X2
20	9.0	12.3	10.50	10.7	4.22	2.5	2.5	2X4
24	11.0	14.3	12.65	12.7	4.22	2.5	2.5	2X4
30	14.0	17.3	15.50	15.7	3.96	13.0	11.0	2X2
34	16.0	19.3	17.50	17.7	3.96	15.0	13.0	2X2
40	19.0	22.3	20.50	20.7				2X5
50	24.0	27.3	25.50	25.7	3.96	23.0	21.0	2X2



CUSTOMER		E&T 恩得利工業股份有限公司 ENTERY INDUSTRIAL CO., LTD.	
DRAWN John SEP-02-2004		PART NO. 3760K-XXXX-01,05,21,11X	
CHECKED		TITLE: 1.0 WTB SMT V/T TYPE DUAL ROW	
APPROVED [Signature]		SHEET 1/1	
SER REVISIONS		UNIT SCALE SIZE REV MM 4:1 A4 AG	

REVISIONS	CHK	DATE	GENERAL TOLERANCE UNLESS OTHERWISE SPECIFIED
RE201405010	Juno	05/30/14	X.X ±0.25
RE201401007	JOSH	04/01/14	X.XX ±0.13
REN130310	JUNO	03/22/13	X.XXX ANG. ±0°30'
RE201206014	MAX	12/26/12	
RE201212002			
RE201209003	JIMMY	09/11/12	
RE201204005	JUNO	04/10/12	