

3D VIEW (REFERENCE)

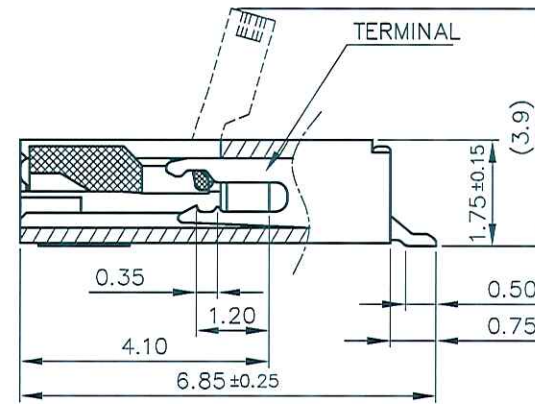
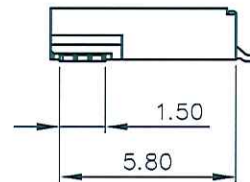
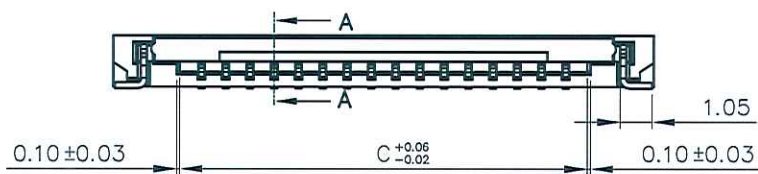
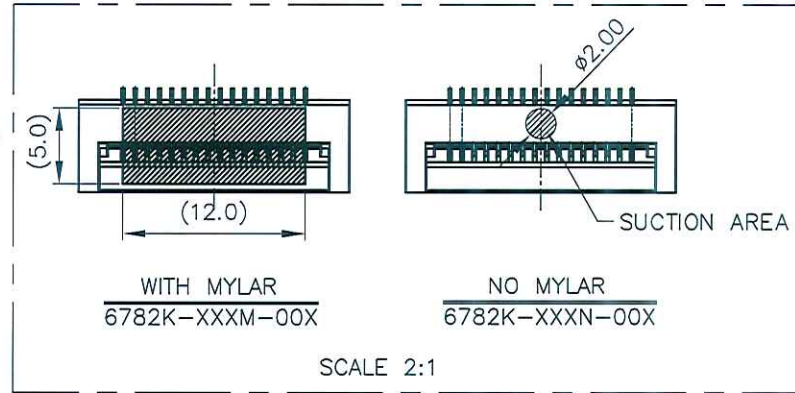
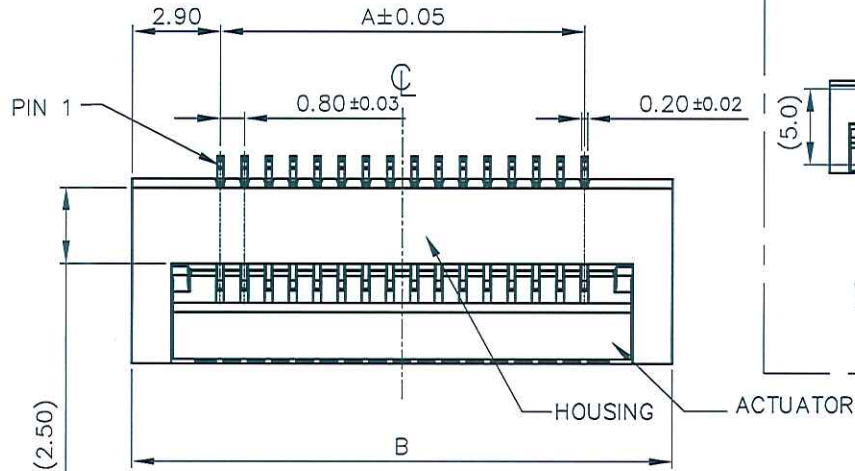
ENTERY INDUSTRIAL CO., LTD.  
JUN 17, 2015  
R&D D.C.C. ISSUED

NOTES: MATERIAL & FINISH

- HOUSING: HIGH-TEMP THERMOPLASTIC UL94V-0  
COLOR: BLACK
- ACTUATOR: HIGH-TEMP THERMOPLASTIC UL94V-0  
COLOR: NATURAL
- TERMINAL: COPPER ALLOY  
PLATING: GOLD-FLASH ON CONTACT & SOLDERING AREA  
OR MATTE-TIE 100~160u" (LEAD FREE)
- FITTING NAIL: COPPER ALLOY  
PLATING: MATTE-TIN PLATED
- ORDER INFORMATION: 6782K-X XX X-00 X

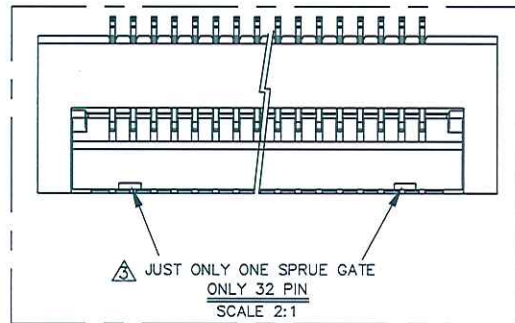
PACKING: E: TUBE  
R: PLASTIC CARRIER  
L: PAPER CARRIER  
TYPE  
N: STANDARD  
M: MALAR

PIN NO.  
△ PLATING: Y: GOLD FLASH ON CONTACT & SOLDERING AREA OVERALL  
50~100u" NICKEL UNDER PLATED.  
Q: MATTE-TIE 100~160u"  
0.8MM ZIF FPC SMT R/A B/C TYPE (HALOGEN FREE)



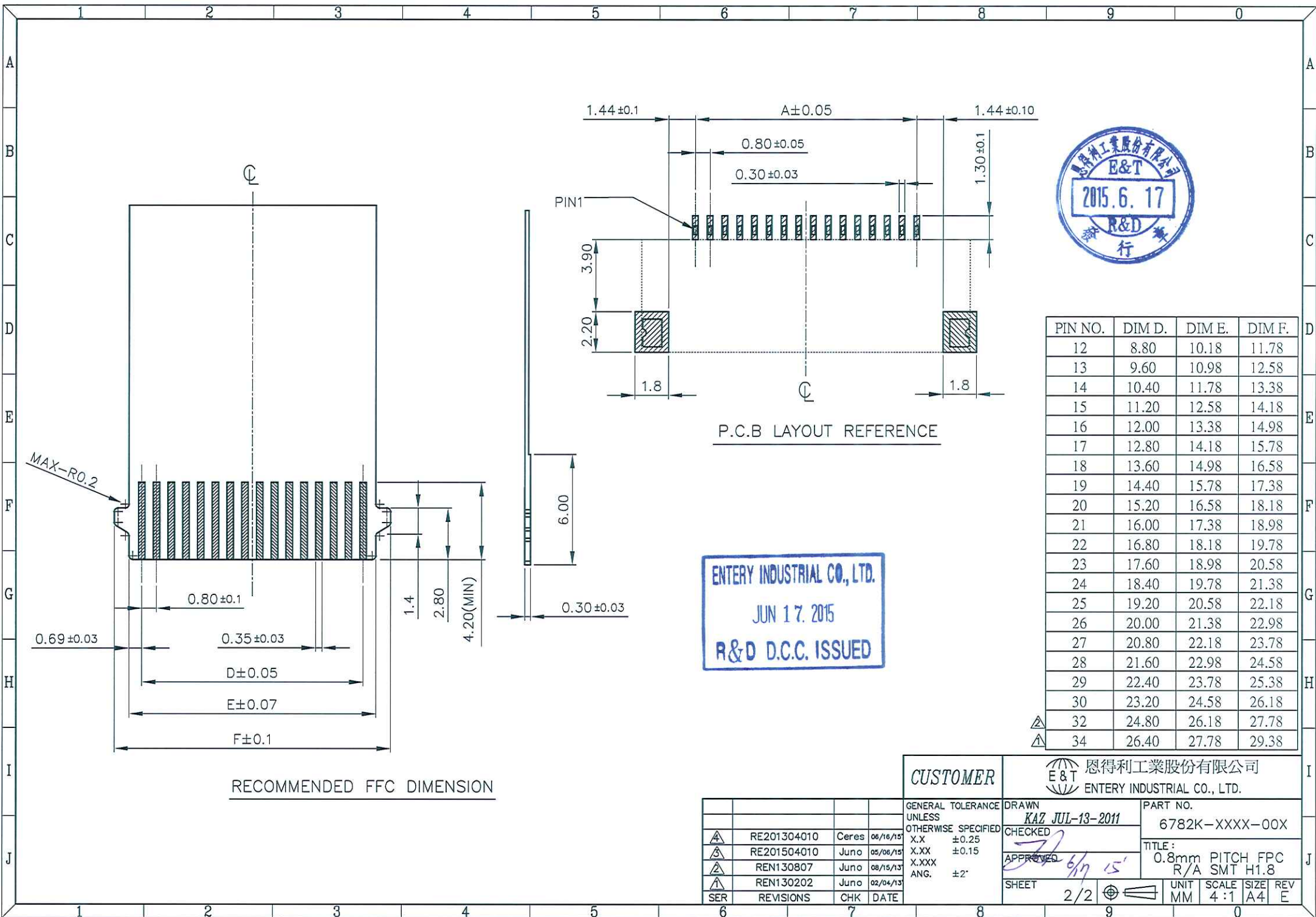
SECTION AA  
SCALE 8:1

PIN NO.	DIM A.	DIM B.	DIM C.	DIM D.
12	8.80	14.60	10.23	10.43
13	9.60	15.40	11.03	11.23
14	10.40	16.20	11.83	12.03
15	11.20	17.00	12.63	12.83
16	12.00	17.80	13.43	13.63
17	12.80	18.60	14.23	14.43
18	13.60	19.40	15.03	15.23
19	14.40	20.20	15.83	16.03
20	15.20	21.00	16.63	16.83
21	16.00	21.80	17.43	17.63
22	16.80	22.60	18.23	18.43
23	17.60	23.40	19.03	19.23
24	18.40	24.20	19.83	20.03
25	19.20	25.00	20.63	20.83
26	20.00	25.80	21.43	21.63
27	20.80	26.60	22.23	22.43
28	21.60	27.40	23.03	23.23
29	22.40	28.20	23.83	24.03
30	23.20	29.00	24.63	24.83
32	24.80	30.60	26.23	26.43
34	26.40	32.20	27.83	28.03



CUSTOMER 恩得利工業股份有限公司  
E & T ENTERY INDUSTRIAL CO., LTD.

REVISIONS	CHK	DATE	GENERAL TOLERANCE UNLESS OTHERWISE SPECIFIED	DRAWN	PART NO.
△	RE201304010	Ceres 06/16/15	X.X ±0.25	KAZ JUL-13-2011	6782K-XXXX-00X
△	RE201504010	Juno 05/06/15	X.XX ±0.15	CHECKED	TITLE: 0.8mm PITCH FPC R/A SMT H1.8
△	REN130807	Juno 08/15/13	X.XXX ANG. ±2'	APPROVED	UNIT SCALE SIZE REV MM 4:1 A4 E
△	REN130202	Juno 02/04/13		SHEET 1/2	



PIN NO.	DIM D.	DIM E.	DIM F.
12	8.80	10.18	11.78
13	9.60	10.98	12.58
14	10.40	11.78	13.38
15	11.20	12.58	14.18
16	12.00	13.38	14.98
17	12.80	14.18	15.78
18	13.60	14.98	16.58
19	14.40	15.78	17.38
20	15.20	16.58	18.18
21	16.00	17.38	18.98
22	16.80	18.18	19.78
23	17.60	18.98	20.58
24	18.40	19.78	21.38
25	19.20	20.58	22.18
26	20.00	21.38	22.98
27	20.80	22.18	23.78
28	21.60	22.98	24.58
29	22.40	23.78	25.38
30	23.20	24.58	26.18
32	24.80	26.18	27.78
34	26.40	27.78	29.38

ENTERY INDUSTRIAL CO., LTD.  
 JUN 17. 2015  
 R&D D.C.C. ISSUED

RECOMMENDED FFC DIMENSION

SER	REVISIONS	CHK	DATE
△	RE201304010	Ceres	06/16/15
△	RE201504010	Juno	05/06/15
△	REN130807	Juno	08/15/13
△	REN130202	Juno	02/04/13

<b>CUSTOMER</b>		恩得利工業股份有限公司 ENTERY INDUSTRIAL CO., LTD.	
GENERAL TOLERANCE UNLESS OTHERWISE SPECIFIED X.X ±0.25 X.XX ±0.15 X.XXX ±0.1 ANG. ±2°		DRAWN <b>KAZ JUL-13-2011</b> CHECKED  APPROVED 6/17 15	PART NO. 6782K-XXXX-00X TITLE: 0.8mm PITCH FPC R/A SMT H1.8
SHEET 2/2		UNIT MM	SCALE 4:1
		SIZE A4	REV E