

NOTES: MATERIAL & FINISH

1. HOUSING: HIGH-TEMPERATURE THERMOPLASTIC UL94V-0

COLOR: BLACK

2. ACTUATOR: HIGH-TEMPERATURE THERMOPLASTIC UL94V-0

COLOR: WHITE

3. CONTACT: COPPER ALLOY, t=0.25mm

PLATING: MATTE-TIN OR TIN OR GOLD-FLASH PLATED

4. ORDER INFORMATION: 6900K-X XX X-00,40X



PACKING: E: TUBE
R: PLATIC REEL
L: PAPER REEL

N: STANDARD
M: MYLAR

PLATING: E: CONTACT AREA TIN
SOLDER AREA TIN

F: CONTACT AREA GOLD FLASH,
SOLDER AREA GOLD FLASH

Q: CONTACT AREA MATTE-TIN
SOLDER AREA MATTE-TIN

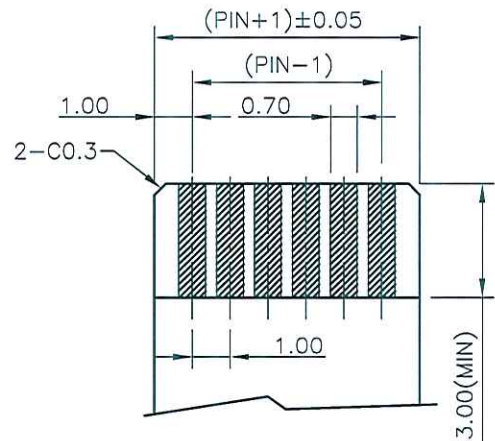
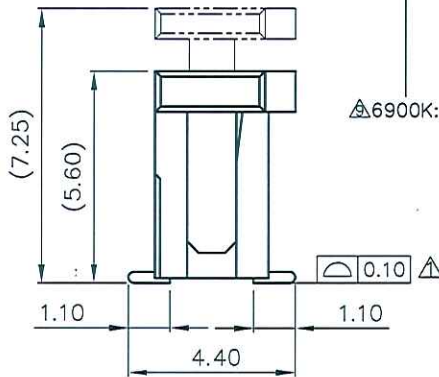
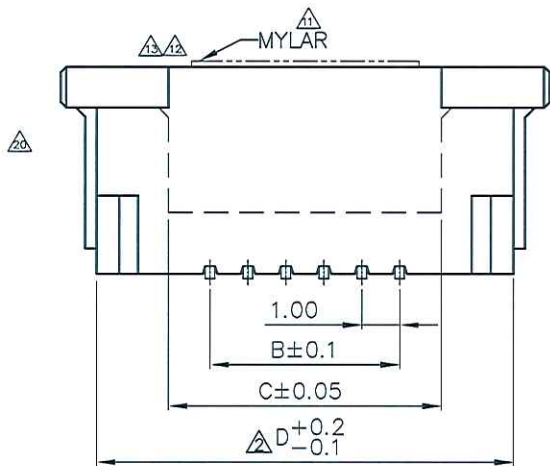
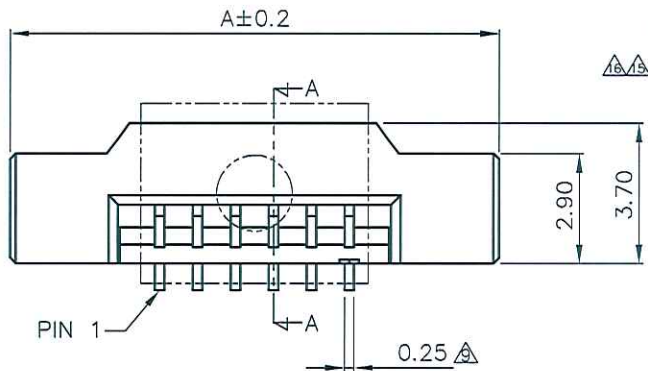
Y: CONTACT AREA GOLD FLASH, (WITH NICKEL BARRIER)
SOLDER AREA GOLD FLASH

M: CONTACT AREA 5u"(MIN) GOLD,
SOLDER AREA 5u"(MIN) GOLD.

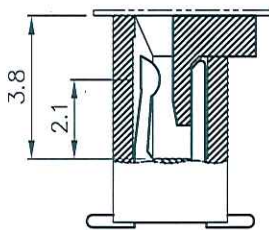
H: CONTACT AREA 15u"(MIN) GOLD,
SOLDER AREA GOLD FLASH

6900K: 1.0 ZIF FPC SMT V/T TYPE (HALOGEN FREE)

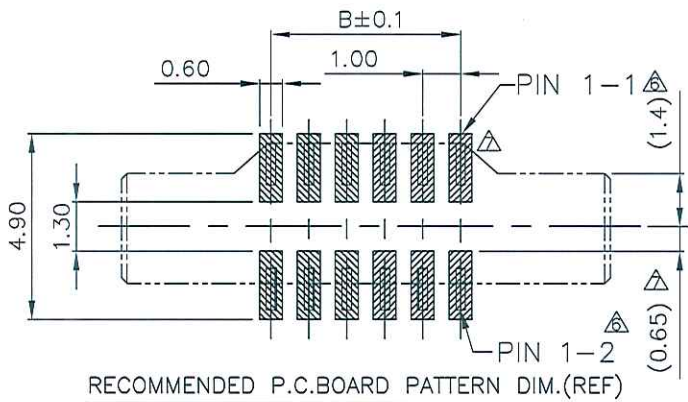
PIN.	A	B	C	D
03	10.0	2.0	4.15	8.00
04	11.0	3.0	5.15	9.00
05	12.0	4.0	6.15	10.00
06	13.0	5.0	7.15	11.00
07	14.0	6.0	8.15	12.00
08	15.0	7.0	9.15	13.00
09	16.0	8.0	10.15	14.00
10	17.0	9.0	11.15	15.00
11	18.0	10.0	12.15	16.00
12	19.0	11.0	13.15	17.00
13	20.0	12.0	14.15	18.00
14	21.0	13.0	15.15	19.00
15	22.0	14.0	16.15	20.00
16	23.0	15.0	17.15	21.00
17	24.0	16.0	18.15	22.00
18	25.0	17.0	19.15	23.00
19	26.0	18.0	20.15	24.00
20	27.0	19.0	21.15	25.00
21	28.0	20.0	22.15	26.00
22	29.0	21.0	23.15	27.00
23	30.0	22.0	24.15	28.00
24	31.0	23.0	25.15	29.00
25	32.0	24.0	26.15	30.00
26	33.0	25.0	27.15	31.00
27	34.0	26.0	28.15	32.00
28	35.0	27.0	29.15	33.00
29	36.0	28.0	30.15	34.00
30	37.0	29.0	31.15	35.00
31	38.0	30.0	32.15	36.00
32	39.0	31.0	33.15	37.00
33	40.0	32.0	34.15	38.00
34	41.0	33.0	35.15	39.00
35	42.0	34.0	36.15	40.00
36	43.0	35.0	37.15	41.00
37	44.0	36.0	38.15	42.00
38	45.0	37.0	39.15	43.00



RECOMMENDED APPLICABLE
FPC LAYOUT (THICKNESS: 0.3±0.03)



SECTION A-A



RECOMMENDED P.C. BOARD PATTERN DIM. (REF)

ENTERY INDUSTRIAL CO., LTD.
OCT 14, 2014
R&D D.C.C. ISSUED

CUSTOMER		恩得利工業股份有限公司 E & T ENTERY INDUSTRIAL CO., LTD.	
RE201409013	Juno	10/09/14	GENERAL TOLERANCE UNLESS OTHERWISE SPECIFIED X.X ±0.30 X.XX ±0.20 X.XXX ANG. ±0°30'
RE201404021	Juno	05/05/14	
RE201401007	JOSH	04/01/14	DRAWN Joan Dec-14-2004 CHECKED APPROVED SHEET 1/1
RE201212026	Juno	02/22/15	
RE201206014	JIMMY	12/18/12	PART NO. 6900K-XXXX-00,40X TITLE: 1.0 ZIF FPC SMT V/T TYPE
RE201112012	JIMMY	01/12/12	
SER	REVISIONS	CHK	DATE
UNIT	SCALE	SIZE	REV
MM	5:1	A4	U