



- NOTES: MATERIAL & FINISH
 1. HOUSING: HIGH-TEMP THERMOPLASTIC UL94V-0
 COLOR: BLACK
 2. ACTUATOR: HIGH-TEMP THERMOPLASTIC UL94V-0
 COLOR: NATURE
 3. TERMINAL: COPPER ALLOY
 PLATING: TIN OR MATTE-TIN OR GOLD FLASH PLATED
 4. FITTING NAIL: COPPER ALLOY
 PLATING: TIN PLATED

△△5. ORDER INFORMATION: 6916K-X XX X-07,57,67,27 X

PACKING: E:TUBE
 R:PLASTIC CARRIER
 L:PAPER CARRIER

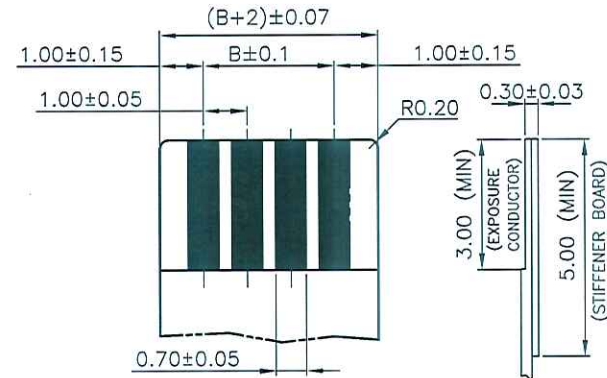
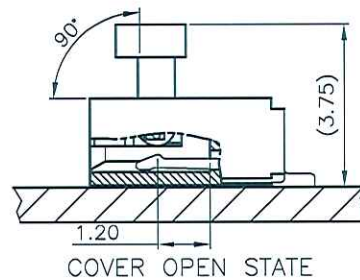
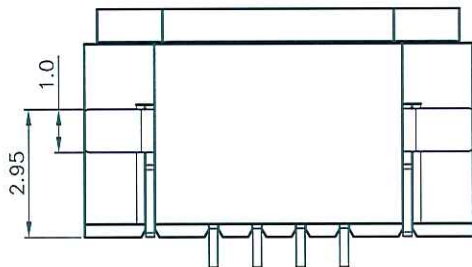
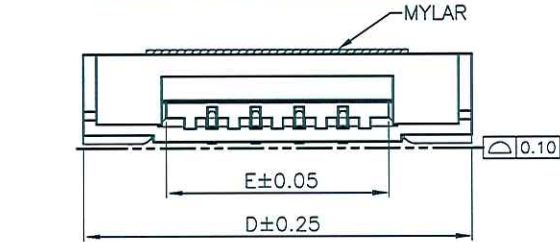
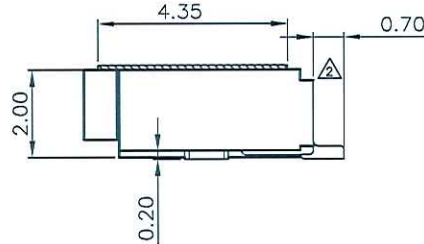
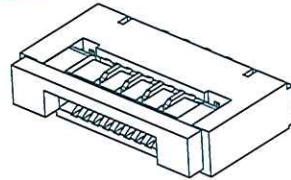
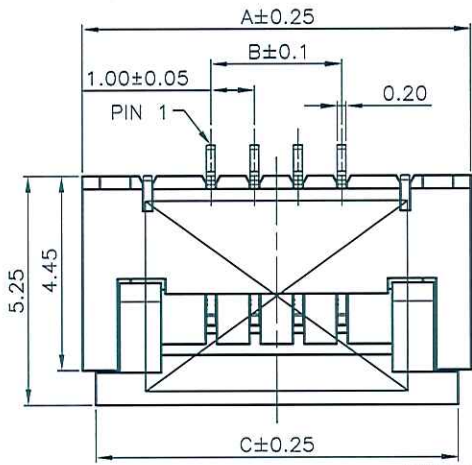
TYPE: 07: STANDARD
 57,67,27: CARRIER DIFFERENT △△

N: STANDARD
 M: MYLAR △
 PIN NO.

PLATING: E: TIN
 Q: MATTE-TIN
 F: GOLD FLA H
 Y AND V: GOLD FLASH (WITH NICKEL BARRIER)
 △ M: CONTACT AREA 5u"(MIN) GOLD
 OTHER AREA GOLD FLASH
 △ H: 15u" GOLD (WITH NICKEL BARRIER)

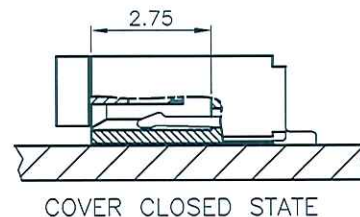
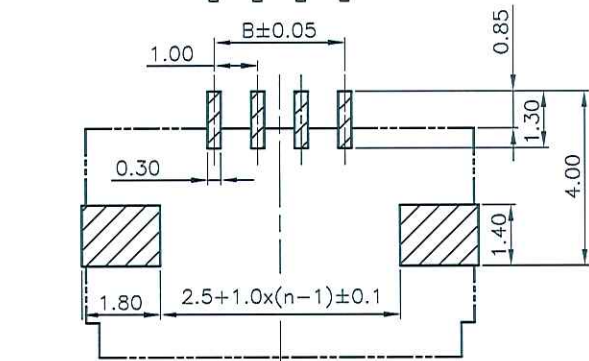
6916K: 1.0 ZIF FPC SMT R/A BOTTOM TYPE (HALOGEN FREE)

PIN	A	B	C	D	E
04	8.90	3.00	8.30	8.9	5.05
05	9.90	4.00	9.30	9.9	6.05
06	10.90	5.00	10.30	10.9	7.05
07	11.90	6.00	11.30	11.9	8.05
08	12.90	7.00	12.30	12.9	9.05
09	13.90	8.00	13.30	13.9	10.05
10	14.90	9.00	14.30	14.9	11.05
11	15.90	10.00	15.30	15.9	12.05
12	16.90	11.00	16.30	16.9	13.05
13	17.90	12.00	17.30	17.9	14.05
14	18.90	13.00	18.30	18.9	15.05
15	19.90	14.00	19.30	19.9	16.05
16	20.90	15.00	20.30	20.9	17.05
17	21.90	16.00	21.30	21.9	18.05
18	22.90	17.00	22.30	22.9	19.05
19	23.90	18.00	23.30	23.9	20.05
20	24.90	19.00	24.30	24.9	21.05
21	25.90	20.00	25.30	25.9	22.05
22	26.90	21.00	26.30	26.9	23.05
23	27.90	22.00	27.30	27.9	24.05
24	28.90	23.00	28.30	28.9	25.05
25	29.90	24.00	29.30	29.9	26.05
26	30.90	25.00	30.30	30.9	27.05
27	31.90	26.00	31.30	31.9	28.05
28	32.90	27.00	32.30	32.9	29.05
29	33.90	28.00	33.30	33.9	30.05
30	34.90	29.00	34.30	34.9	31.05



RECOMMENDED APPLICABLE

ENTERY INDUSTRIAL CO., LTD.
 MAY 12 2015
 R&D D.C.C. ISSUED



CUSTOMER			恩得利工業股份有限公司 ENTERY INDUSTRIAL CO., LTD.		
GENERAL TOLERANCE UNLESS OTHERWISE SPECIFIED	DRAWN Juno JUN-29-2012	PART NO. 6916K-XXXX-07,57,67,27X	TITLE: 1.0 ZIF FPC SMT R/A TYPE BOTTOM CONTACT H=2.00		
X.X ±0.25 X.XX ±0.15 X.XXX ANG. ±3'	CHECKED <i>Heise</i>		SCALE SIZE REV MM 8:1 A4 I		
REVISIONS	APPROVED <i>Heise</i>		UNIT MM		
SER	SHEET 1/1		ANG.		
CHK					
DATE					

REVISIONS	CHK	DATE
REN150501	Juno	05/06/12
RE201401007	Juno	05/21/14
RE201403006	Juno	05/21/14
RE201311003	Juno	11/12/13
RE201310025	Juno	07/02/13
RE201306037	Juno	05/27/12
RE201303015	JUNO	12/17/12
RE201211006	JIMMY	